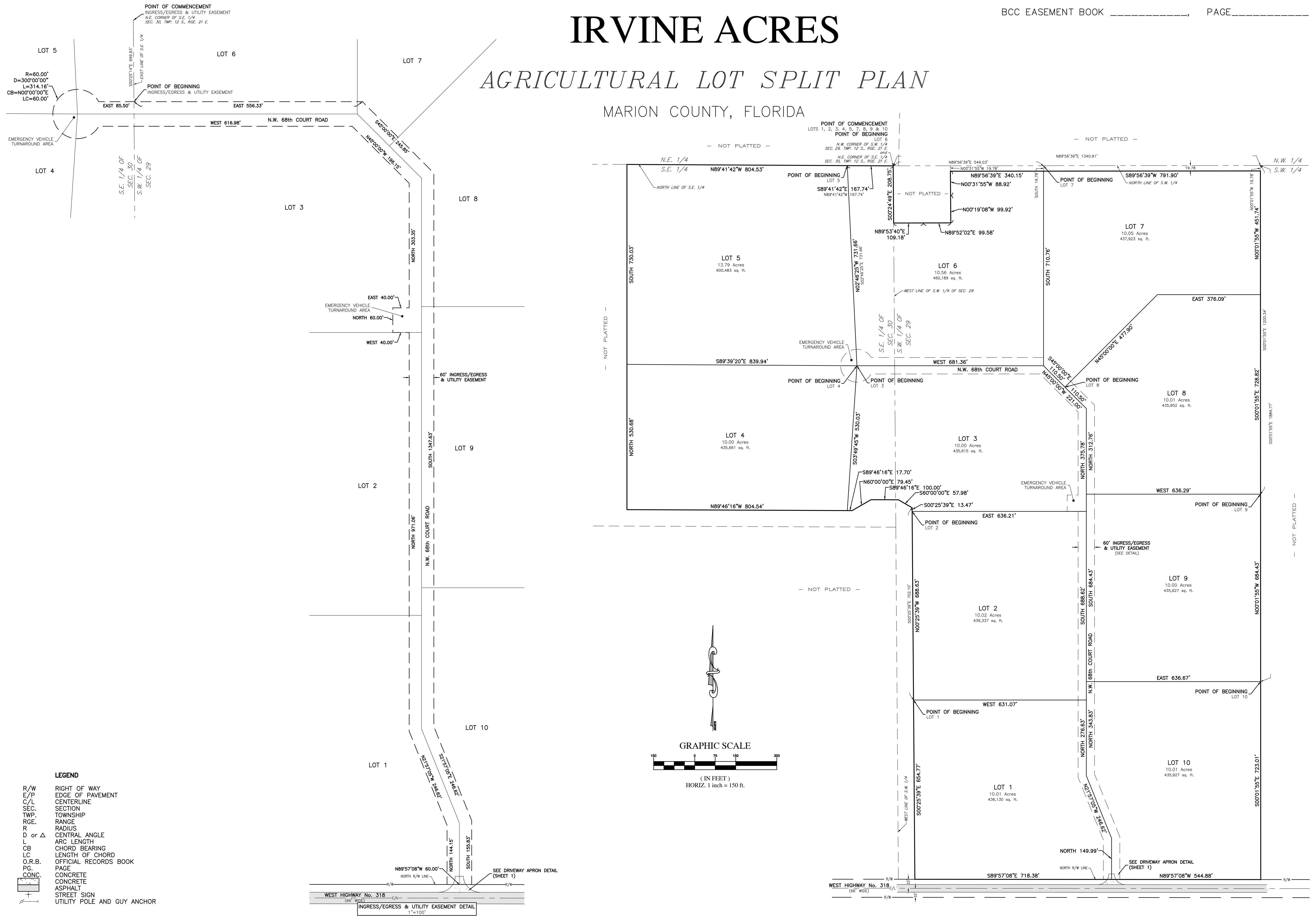


IRVINE ACRES

AGRICULTURAL LOT SPLIT PLAN

MARION COUNTY, FLORIDA



- LEGEND**
- R/W RIGHT OF WAY
 - E/P EDGE OF PAVEMENT
 - C/L CENTERLINE
 - SEC. SECTION
 - TWP. TOWNSHIP
 - RGE. RANGE
 - R. RADIUS
 - D or Δ CENTRAL ANGLE
 - L ARC LENGTH
 - CB CHORD BEARING
 - LC LENGTH OF CHORD
 - O.R.B. OFFICIAL RECORDS BOOK
 - PG. PAGE
 - CONC. CONCRETE
 - ASPH. ASPHALT
 - STREET SIGN
 - UTILITY POLE AND GUY ANCHOR

DATE	REVISION

Robert L. Rogers, PE
 rrogers@rogerseng.com
 Rodney K. Rogers, PSM
 rkrogers@rogerseng.com
 Mekelle M. Boyer, PSM
 kboyer@rogerseng.com

ROGERS ENGINEERING & Land Surveying
 1105 S.E. 3rd Avenue • Ocala, Florida 34471 • Ph. (352) 622-9214 • Lic. Bus. #4074

IRVINE ACRES
 AGRICULTURAL LOT SPLIT PLAN
 Map of Lots & Easements

JOB No. KB_IRVINE ACRES ALS
DATE 05/26/2025
SCALE 1" = 150'
SHEET 2 OF 2