

FOR SALE



69.8 +/- ACRE
RECREATIONAL LAND DISPOSITION

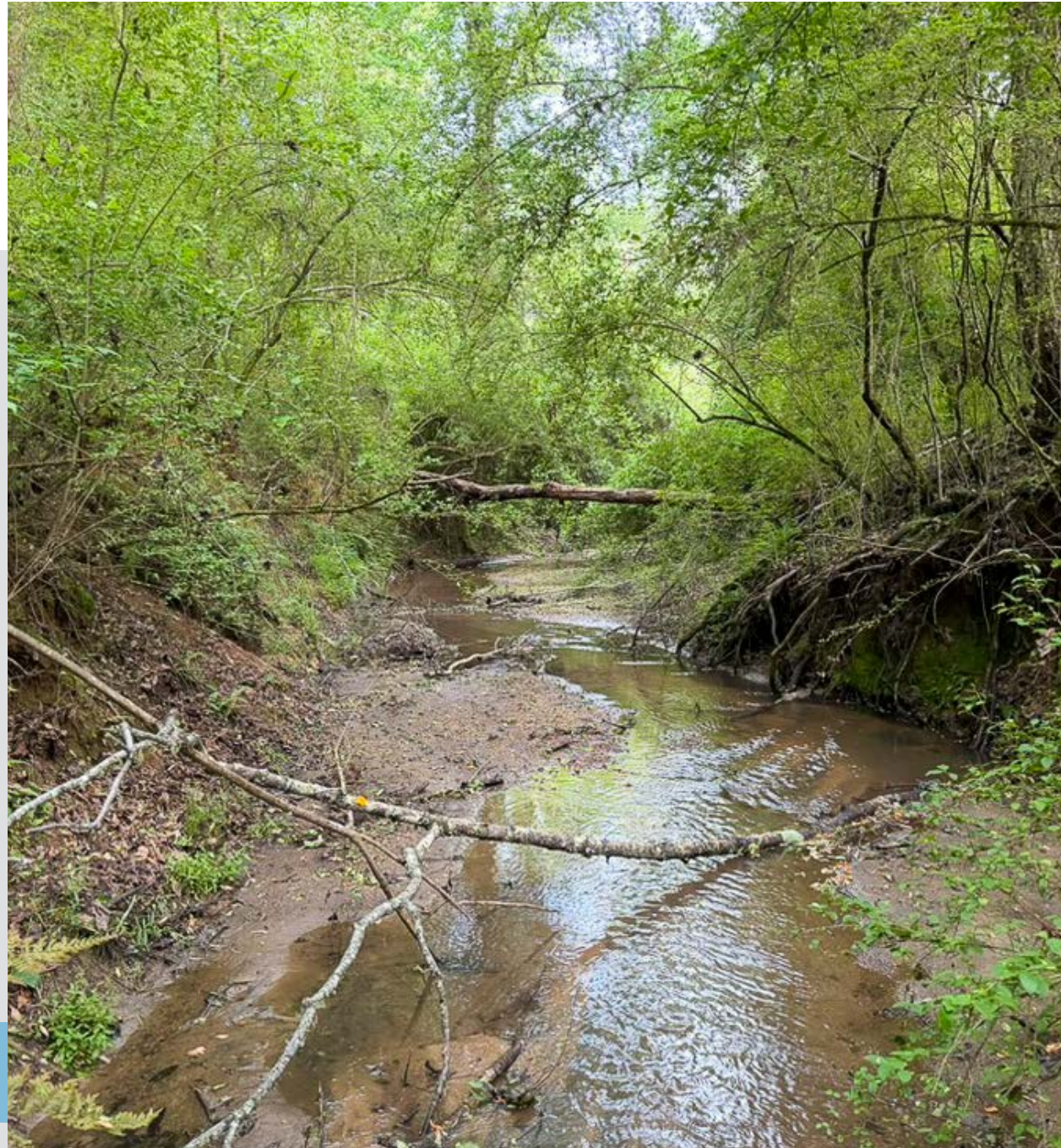
LAMAR COUNTY, GEORGIA



PROPERTY FEATURES

- | 69.8 Acres
- | 5 minutes from downtown Barnesville
- | 1,700 feet of road frontage on Yatesville Road
- | 2,500 feet of stream frontage
- | Mix of Hardwood and Pines
- | Zoned Agricultural Residential
- | Power and City Water available
- | Flat topography
- | Healthy population of Whitetail Deer and Turkey

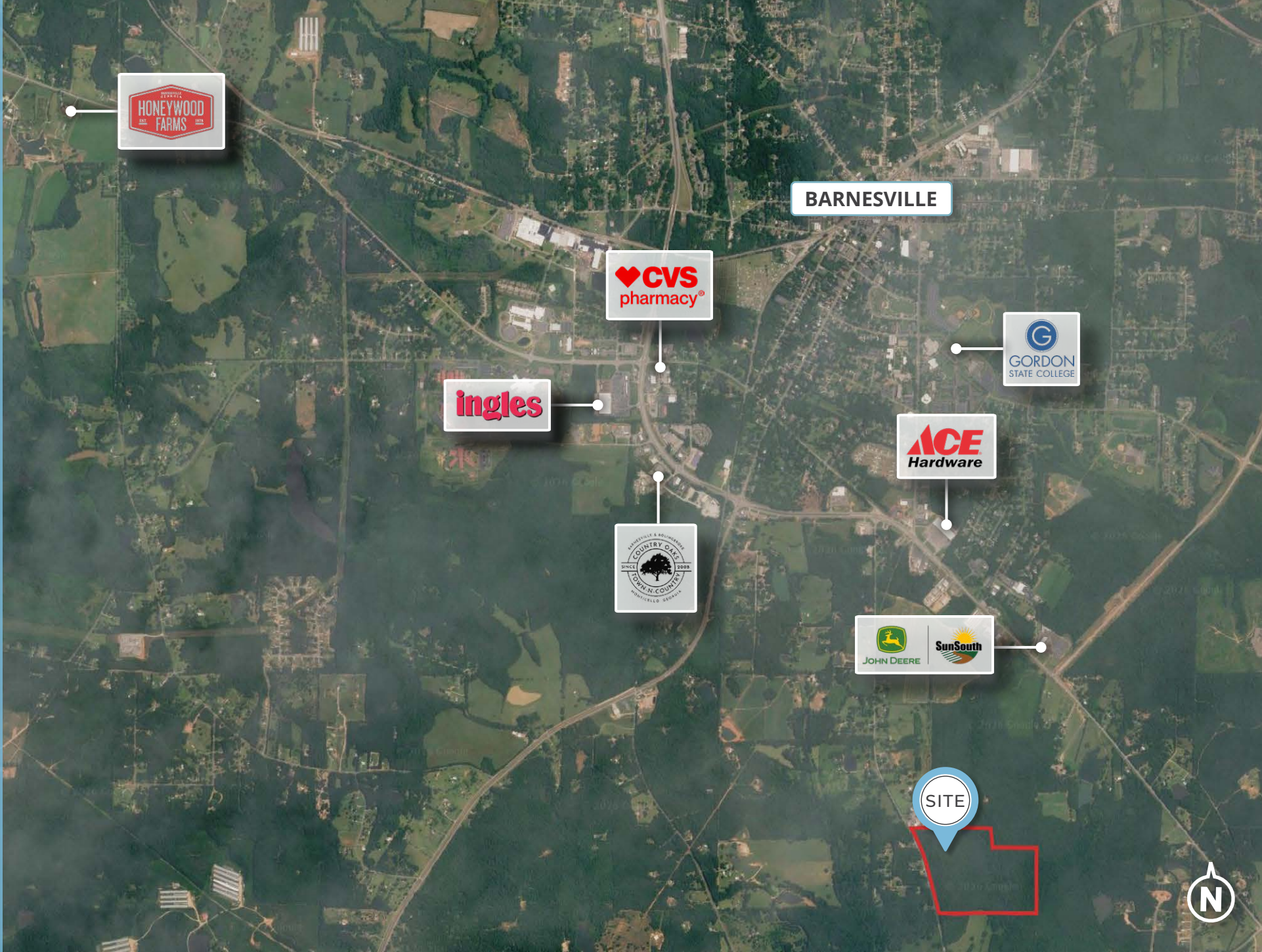
ASKING PRICE: \$558,400 (\$8,000/ACRE)

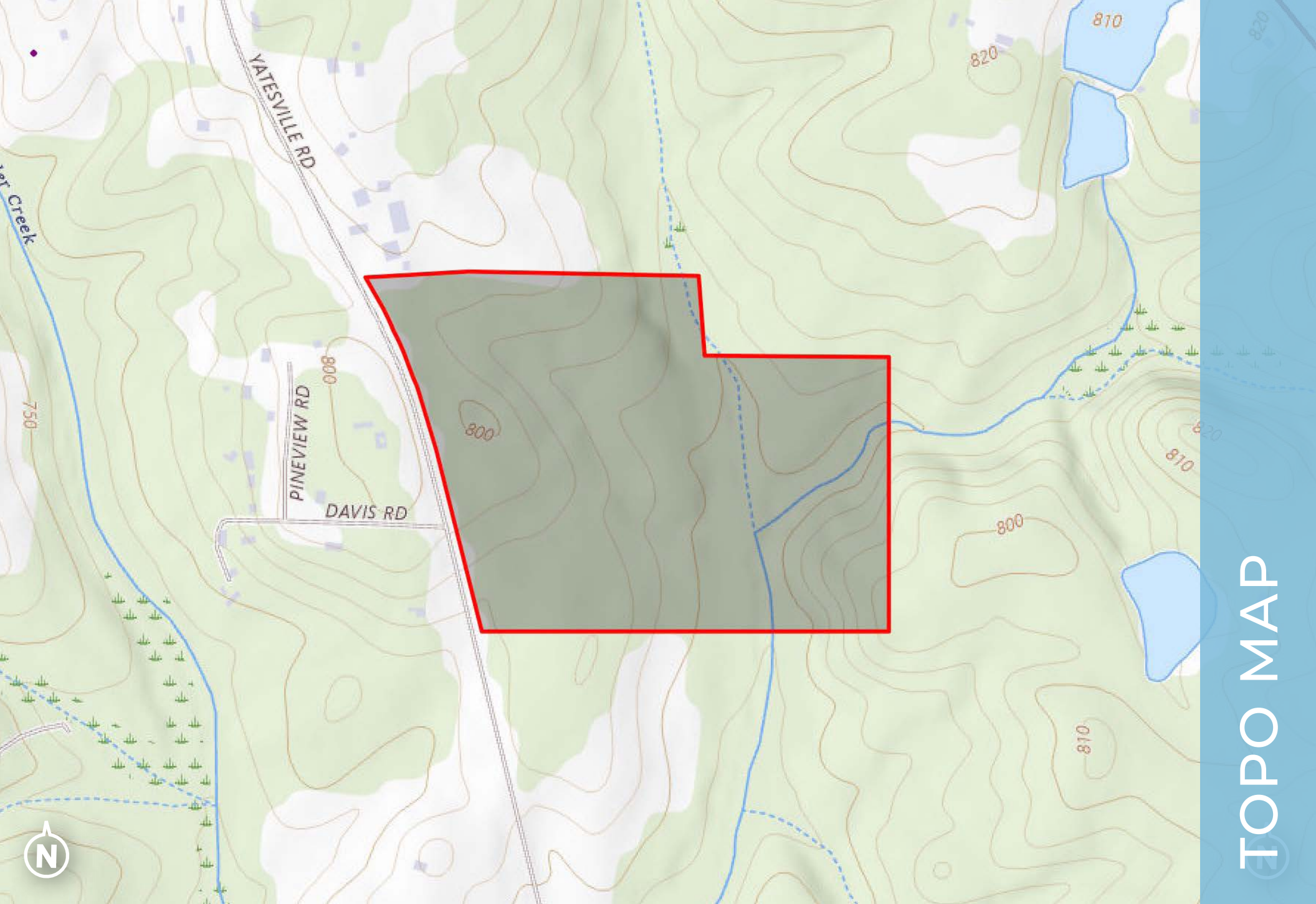






POINTS OF INTEREST





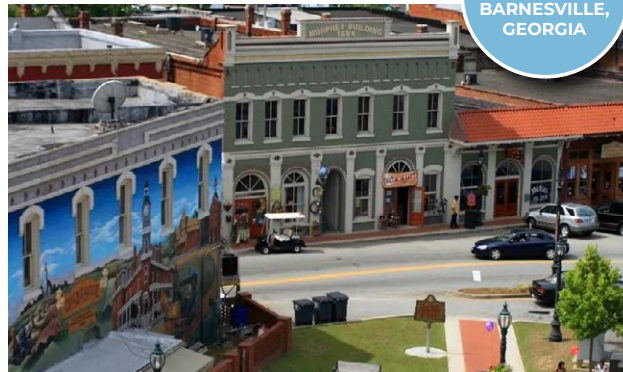
TOPO MAP

BARNESVILLE GEORGIA

AREA OVERVIEW



[CLICK HERE FOR MORE ON BARNESVILLE, GEORGIA](#)



Downtown Barnesville, GA is a historic main street district centered around its courthouse square, reflecting the city's roots as a regional trade and rail hub since its founding in 1826. Today, Barnesville and the greater Lamar County area are home to approximately 14,000 residents.

The downtown area features a walkable, red-brick streetscape lined with a mix of locally owned shops, restaurants, and civic buildings. With consistent small-town activity, regular community events, and ongoing revitalization efforts, downtown Barnesville offers classic Georgia charm alongside a modest yet stable commercial presence.



CONTACT US

DISCLAIMER

Information is deemed from reliable sources. No warranty is made as to its accuracy.



HEATH MILLIGAN
PRINCIPAL

404.647.4999

heath@macallanre.com



DOUGLAS DAVIDSON
LAND SPECIALIST

404.821.4809

douglas@macallanre.com



1642 Powers Ferry Road SE, Suite 250, Marietta, Georgia 30067