

West Lake Buffum Acreage

0 Lake Buffum Rd W, Fort Meade, Florida 33841

Daniel Lanier, ALC
863-698-2971
daniel@saundersrealestate.com

Lake Buffum Rd W

PROPERTY OVERVIEW



Sale Price

\$350,000

Offering Summary

Acreage:	20.17 Acres
Price / Acre:	\$17,353
State:	Florida
City:	Fort Meade
County:	Polk
Property Type:	Citrus, Acreage and Estates, Farms and Cropland

Property Overview

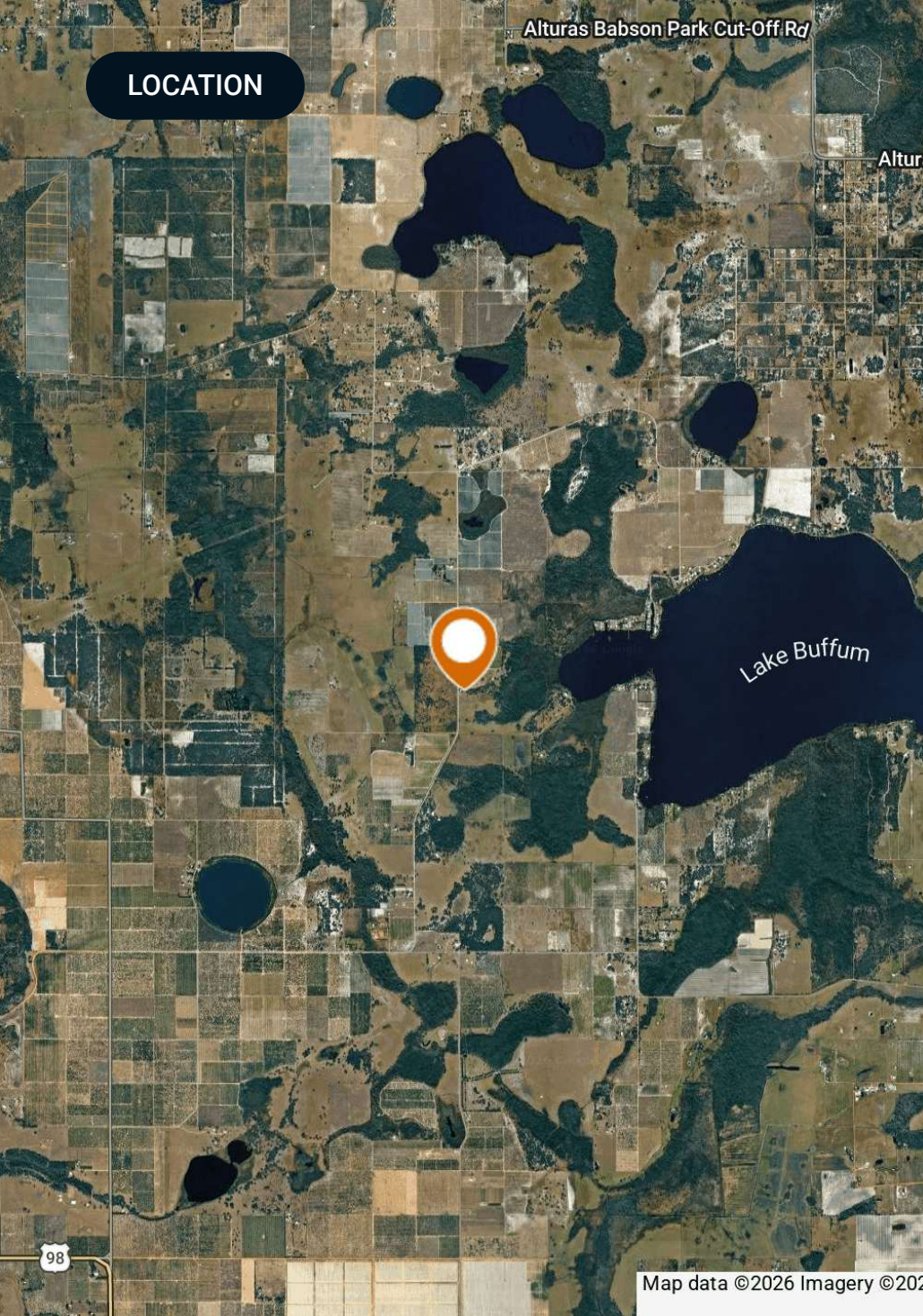
West Lake Buffum Acreage is 20.17 acres located outside of Fort Meade on West Lake Buffum Road. This property is almost completely uplands with about 1/4 of an acre in wetlands. There is an 8" well powered by a Deutz diesel engine, with the ability to irrigate the entire property at once. While currently planted in citrus, this property would be a great place to have a home on acreage or convert to other crops such as strawberries, vegetables, hay and so much more.

SPECIFICATIONS & FEATURES



Specifications & Features

- Uplands / Wetlands:** 19.92 acres of uplands, 0.25 acres of wetlands
- Soil Types:**
- Sparr
 - Lochloosa and Felda sands
- Water Source & Utilities:** One 8" well with Deutz diesel engine
- Road Frontage:** 660 feet of frontage on Lake Buffum Road West
- Current Use:** Citrus grove



Location & Driving Directions

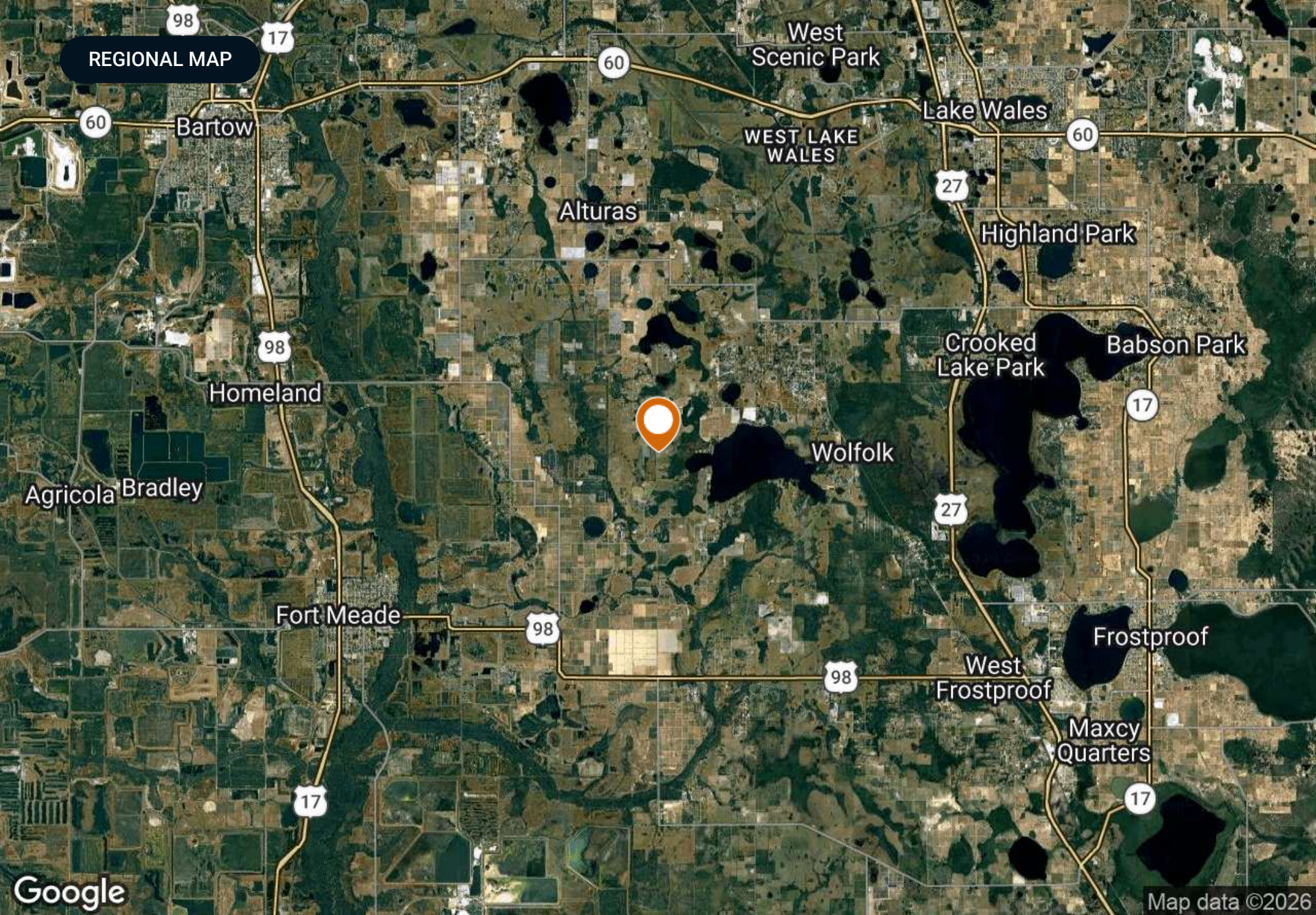
Parcel: 26311500000014010

GPS: 27.7984003, -81.6949808

- From Fort Meade travel east on US 98 for 4 miles
- Turn north on Lake Hendry Road and travel for 1.75 miles
- Turn east on Lake Buffum Road South
- Follow the curve north onto Lake Buffum Road West
- Go north for 1.6 miles and the property will be on the east side of Lake Buffum Road west.

Driving Directions:

Showing Instructions: Contact Daniel Lanier



AERIAL MAP



West Lake Buffum Acreage

■ Polygon



©2026 Saunders Real Estate® Any information displayed should be verified and is not guaranteed to be accurate by Saunders Real Estate. You may not copy or use this material without written consent from Saunders Real Estate.

WETLANDS MAP



Wetlands NWI

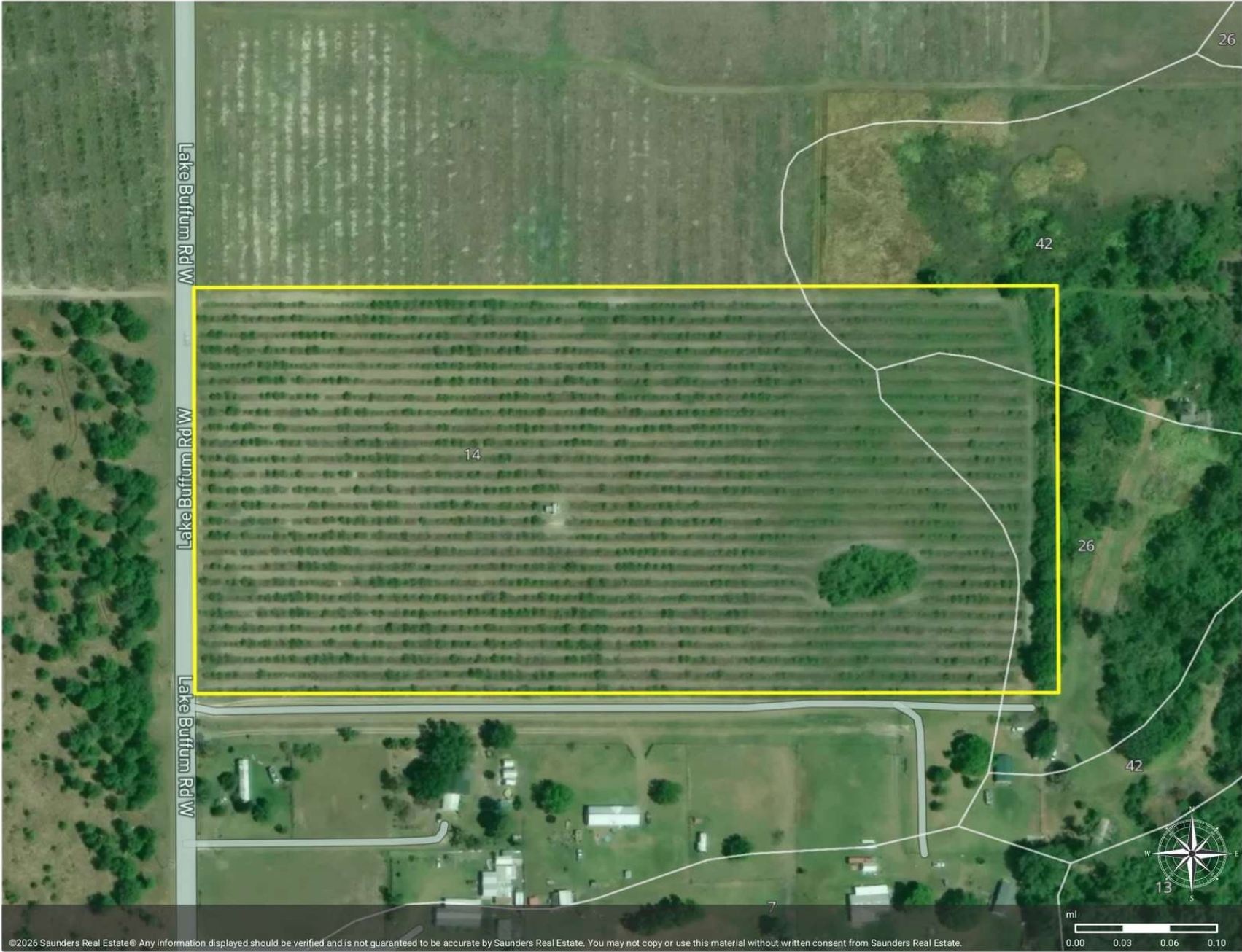
- Polygon
- Wetlands NWI: Palustrine

CODE	DESCRIPTION	ACRES
PAB4Hx	Freshwater Pond	0.25
TOTAL UPLAND		19.92
TOTAL WETLAND		0.25
TOTAL		20.17



©2026 Saunders Real Estate® Any information displayed should be verified and is not guaranteed to be accurate by Saunders Real Estate. You may not copy or use this material without written consent from Saunders Real Estate.

SOILS MAP



Soils

- Polygon
- Soils

MUID	COMPONENT NAME	ACRES
14	Sparr	17.52
26	Lochloosa	1.61
42	Felda	1.04
TOTAL		20.17



©2026 Saunders Real Estate® Any information displayed should be verified and is not guaranteed to be accurate by Saunders Real Estate. You may not copy or use this material without written consent from Saunders Real Estate.

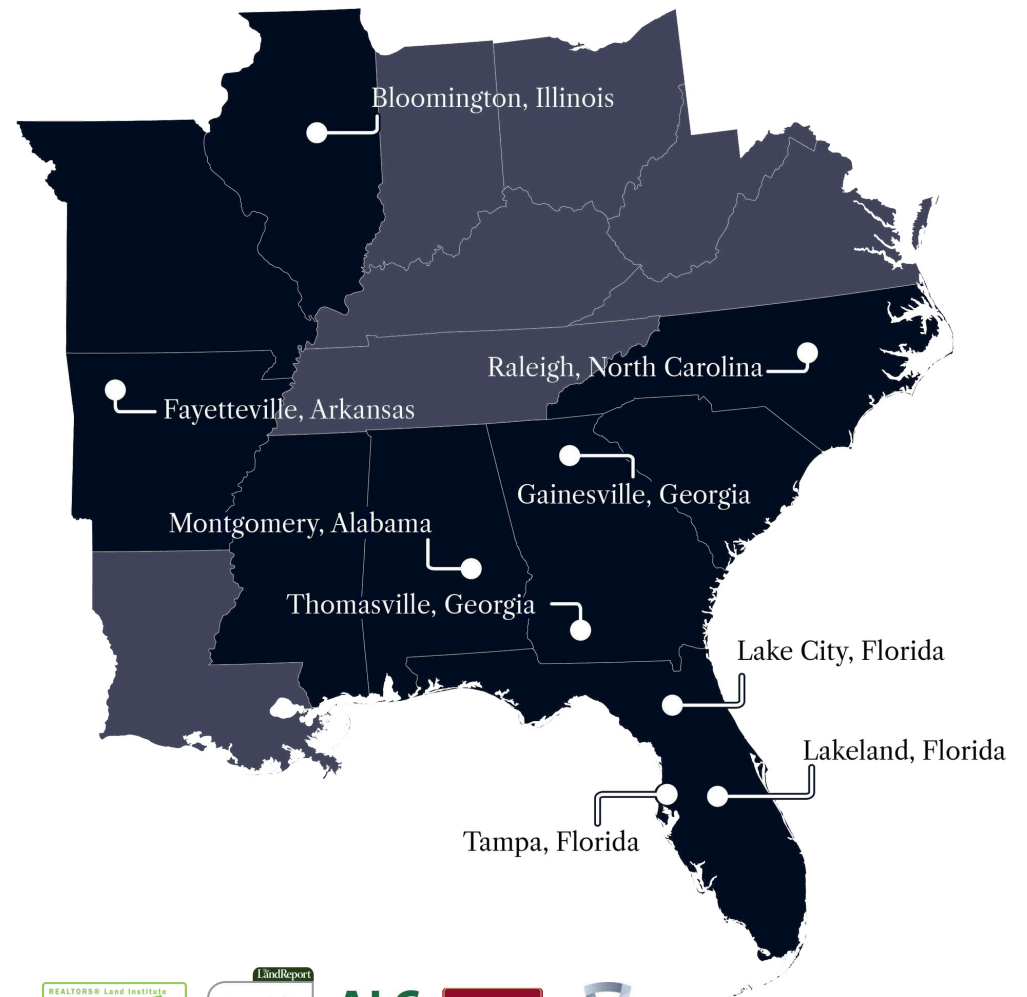
ADDITIONAL PHOTOS

Lake Buffum





At Saunders Real Estate, we deliver full-service real estate solutions, built on more than 30 years of trusted experience. Our dedicated teams offer tailored guidance backed by deep regional insight and a proven track record. We believe that successful outcomes start with strong relationships built on trust and a shared commitment to your goals.



877-518-5263 • info@saundersrealestate.com



©2026 Saunders Real Estate, LLC. All rights reserved. The information contained in this communication is strictly confidential. This information has been obtained from sources believed to be reliable but has not been verified. NO WARRANTY OR REPRESENTATION, EXPRESS OR IMPLIED, IS MADE AS TO THE CONDITION OF THE PROPERTY (OR PROPERTIES) REFERENCED HEREIN OR AS TO THE ACCURACY OR COMPLETENESS OF THE INFORMATION CONTAINED HEREIN, AND SAME IS SUBMITTED SUBJECT TO ERRORS, OMISSIONS, CHANGE OF PRICE, RENTAL OR OTHER CONDITIONS, WITHDRAWAL WITHOUT NOTICE, AND TO ANY SPECIAL LISTING CONDITIONS IMPOSED BY THE PROPERTY OWNER(S). ANY PROJECTIONS, OPINIONS OR ESTIMATES ARE SUBJECT TO UNCERTAINTY AND DO NOT SIGNIFY CURRENT OR FUTURE PROPERTY PERFORMANCE.