

180± Acres

Cattle | Hunting | Recreation

Copiah & Hinds County



\$799,000



**Tom
Smith
LAND AND
HOMES**

Expect More. Get More.

TomSmithLandandHomes.com

Office: 601.898.2772

Property Information

Location:

- 5.7 miles from Crystal Springs, MS

Coordinates:

- 32.046, -90.38975

Property Use:

- Residential, Recreational, Cattle, Timber

Property Highlights

- 180± acres
- 1,560± sq ft home
- 3 Bedrooms
- Hardwood and Pine
- 45± acres fenced for cattle
- 7 structures used for storage
- 4 gated entry points
- Well maintained road system



**BRADY
RICHARDSON**

MANAGING BROKER

Office: 662.268.6333

Cell: 662.418.8791

Brady@TomSmithLand.com



Expect More. Get More.

**A Real Estate Expert
You Can Trust!**



The Property

180± Acres

Located along the Hinds and Copiah County line, this 180± acre property offers a rare combination of working cattle ground, recreational hunting land, and comfortable country living all in one turnkey package. The property features 45± acres that is fenced and ready for cattle, making this an excellent opportunity for livestock operations or a hobby farm. The property is well-equipped with seven barns providing lots of space for equipment, hay storage, and farm operations. The property features a 1,560± square foot home offering 3 bedrooms and 1 bathroom, ideal as a primary residence, weekend getaway, or hunting camp headquarters. Outdoorsmen will appreciate the diversity this tract provides. With a healthy mix of hardwood and pine timber, the land supports abundant wildlife habitat. Seven established food plots are already in place, creating a proven hunting setup for deer and turkey. Four ponds are scattered throughout the property, offering reliable water sources for livestock and wildlife while adding recreational appeal. Access is excellent with four gated entry points with paved road frontage, allowing convenient entry for equipment, hunting access, or future land management. Whether you are looking for a cattle operation, hunting retreat, investment property, or private country escape, this tract checks all the boxes. Call Brady to schedule your private showing today!



**BRADY
RICHARDSON**

MANAGING BROKER

Office: 662.268.6333

Cell: 662.418.8791

Brady@TomSmithLand.com



The Property



**BRADY
RICHARDSON**

MANAGING BROKER

Office: 662.268.6333

Cell: 662.418.8791

Brady@TomSmithLand.com



Expect More. Get More.

The Property



**BRADY
RICHARDSON**

MANAGING BROKER

Office: 662.268.6333

Cell: 662.418.8791

Brady@TomSmithLand.com



Expect More. Get More.

The Property



**BRADY
RICHARDSON**

MANAGING BROKER

Office: 662.268.6333

Cell: 662.418.8791

Brady@TomSmithLand.com



Trail Camera Pictures



**BRADY
RICHARDSON**

MANAGING BROKER

Office: 662.268.6333

Cell: 662.418.8791

Brady@TomSmithLand.com



The Property



- 1,560± square feet
- 3 Bedrooms
- 1 Bathroom

- 7 structures used for storage
- 4 gated entry points
- Paved road frontage

**BRADY
RICHARDSON**
MANAGING BROKER

Office: 662.268.6333

Cell: 662.418.8791

Brady@TomSmithLand.com

**Tom
Smith
LAND AND
HOMES**
Expect More. Get More.

Aerial Photos



**BRADY
RICHARDSON**

MANAGING BROKER

Office: 662.268.6333

Cell: 662.418.8791

Brady@TomSmithLand.com



Expect More. Get More.

Aerial Photos



**BRADY
RICHARDSON**

MANAGING BROKER

Office: 662.268.6333

Cell: 662.418.8791

Brady@TomSmithLand.com

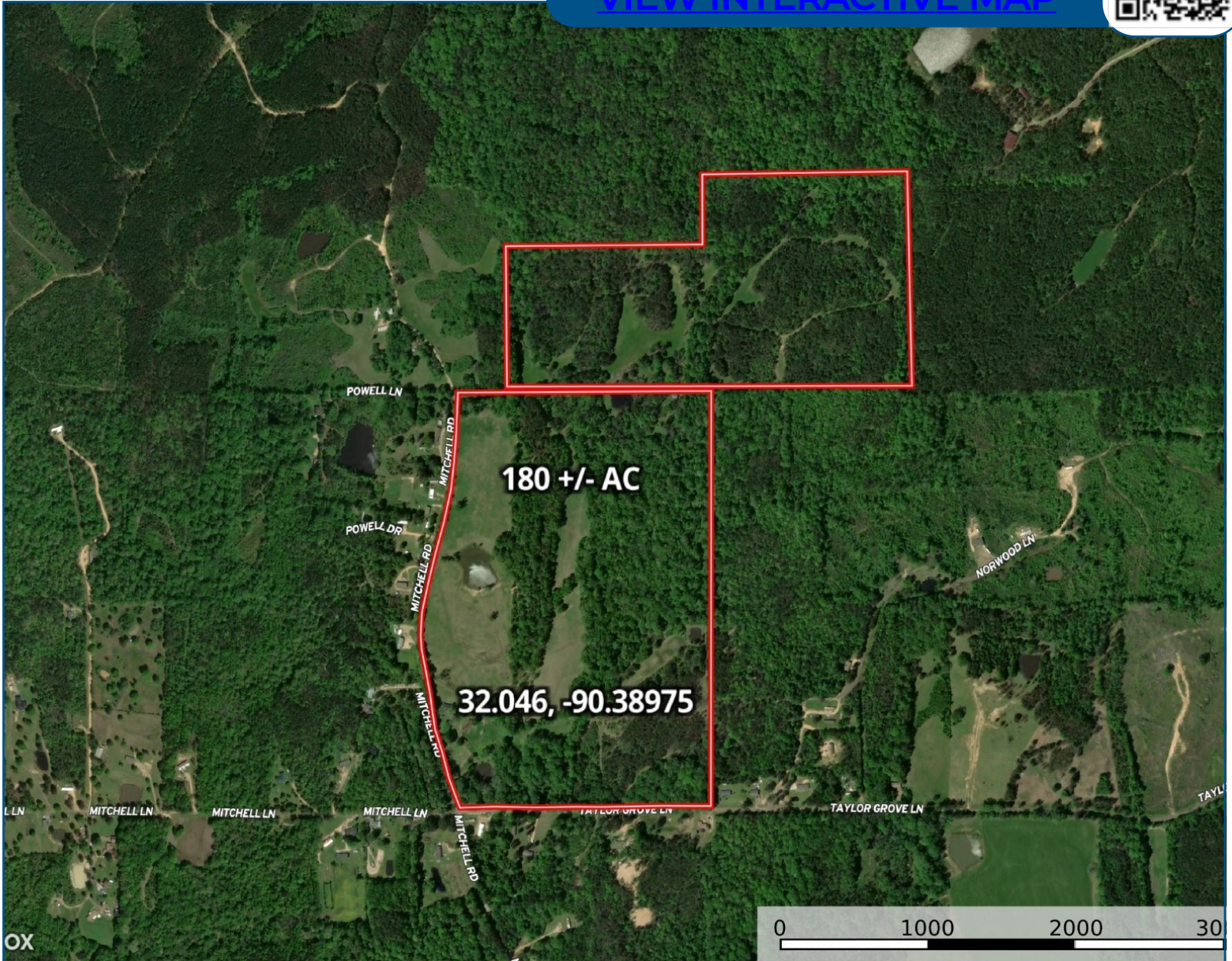


Expect More. Get More.

Aerial Map



[VIEW INTERACTIVE MAP](#)



**BRADY
RICHARDSON**

MANAGING BROKER

Office: 662.268.6333

Cell: 662.418.8791

Brady@TomSmithLand.com

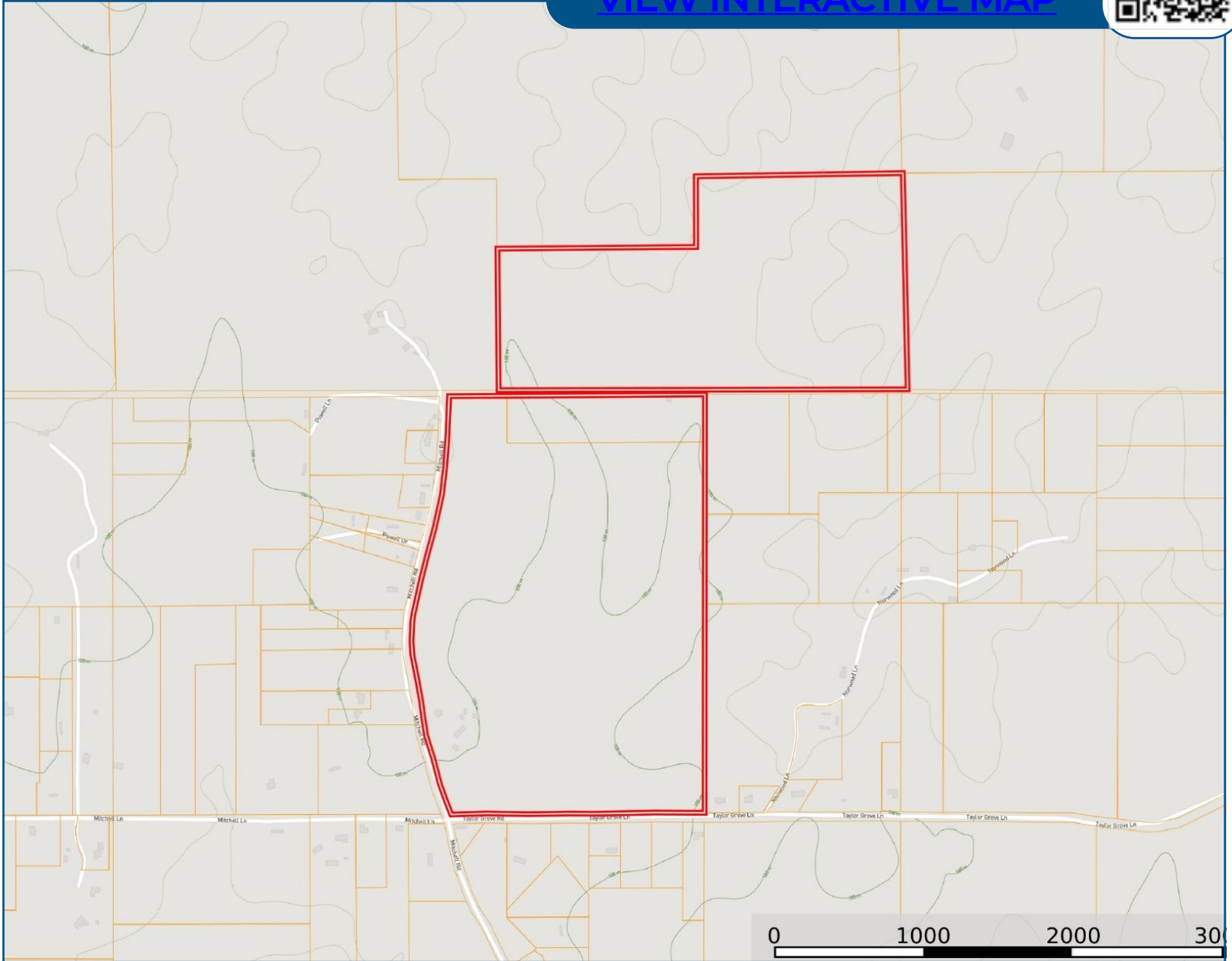


Expect More. Get More.

Ownership Map



[VIEW INTERACTIVE MAP](#)



**BRADY
RICHARDSON**

MANAGING BROKER

Office: 662.268.6333

Cell: 662.418.8791

Brady@TomSmithLand.com

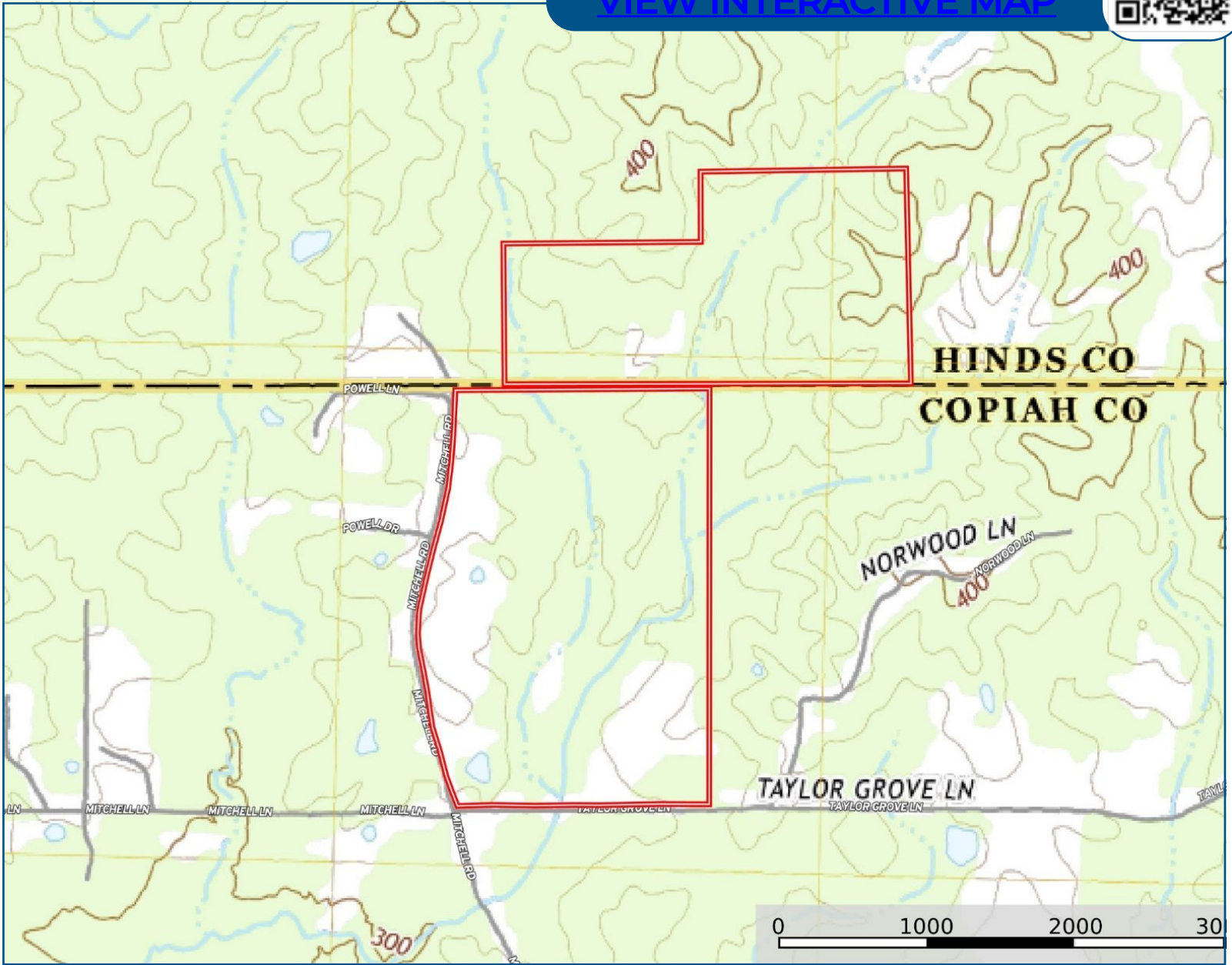


Expect More. Get More.

Topo Map



[VIEW INTERACTIVE MAP](#)



**BRADY
RICHARDSON**

MANAGING BROKER

Office: 662.268.6333

Cell: 662.418.8791

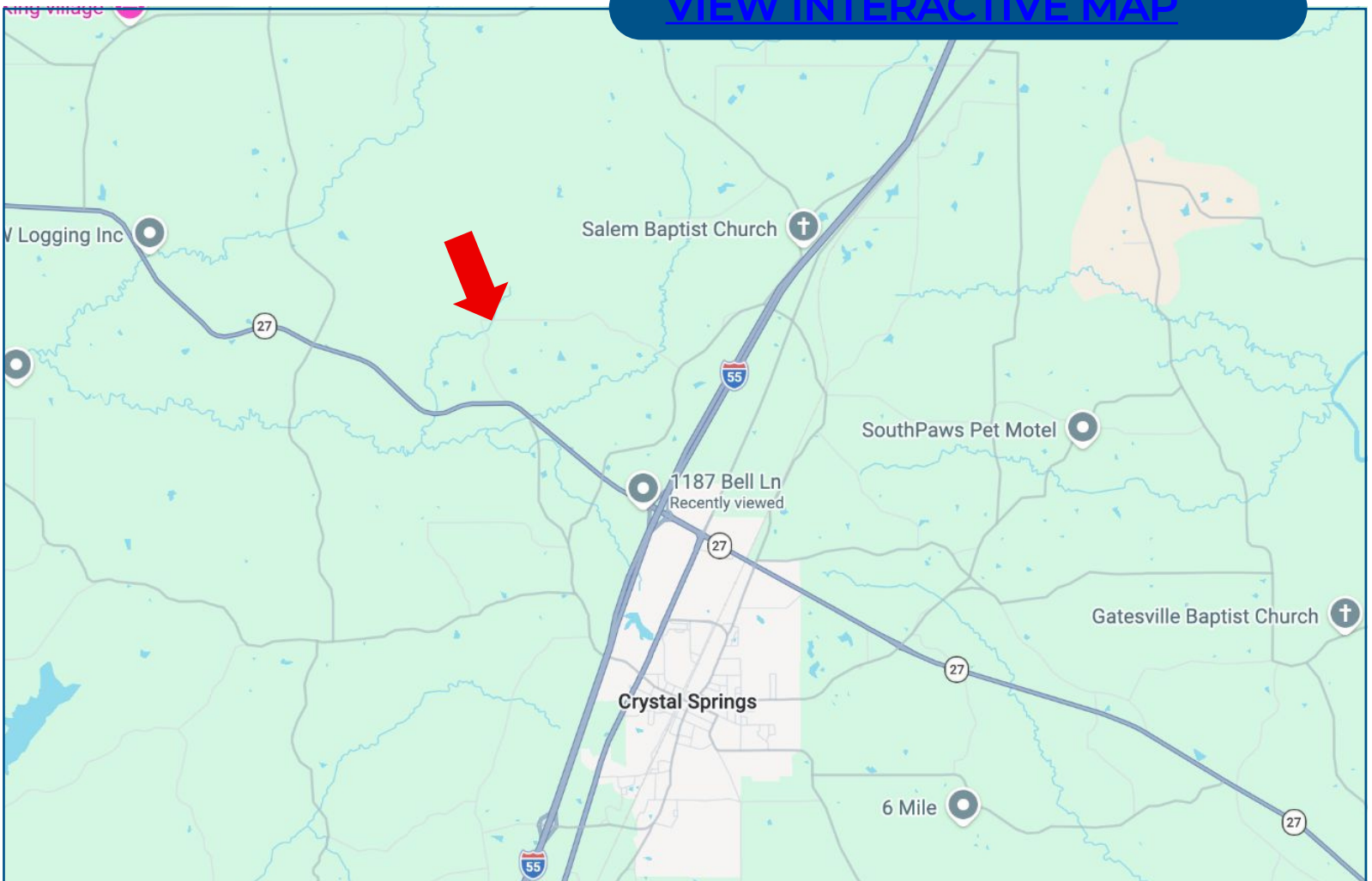
Brady@TomSmithLand.com



Expect More. Get More.

Directional Map

[VIEW INTERACTIVE MAP](#)



Directions from the intersection of I55 and Hwy 27 West: Head west on HWY 27 for 1.8 miles and turn right on to Mitchell Road. In 1 mile the property will be on your right.

**BRADY
RICHARDSON**

MANAGING BROKER

Office: 662.268.6333

Cell: 662.418.8791

Brady@TomSmithLand.com

